



Littelfuse Overview

Empowering a sustainable,
connected, and safer world

 **Littelfuse®**
Expertise Applied | Answers Delivered

Empowering a sustainable, connected, and safer world

Who We Are

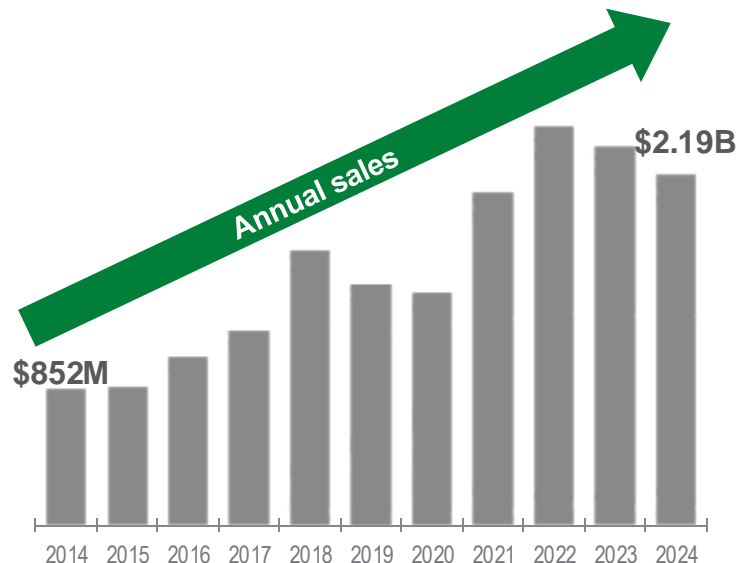
- **\$2.19B** industrial technology company
- **16,000** innovative employees across **20 countries** worldwide
- **Designer & manufacturer** of leading technologies that improve the safety, reliability, & performance of our customers' products

What We Do

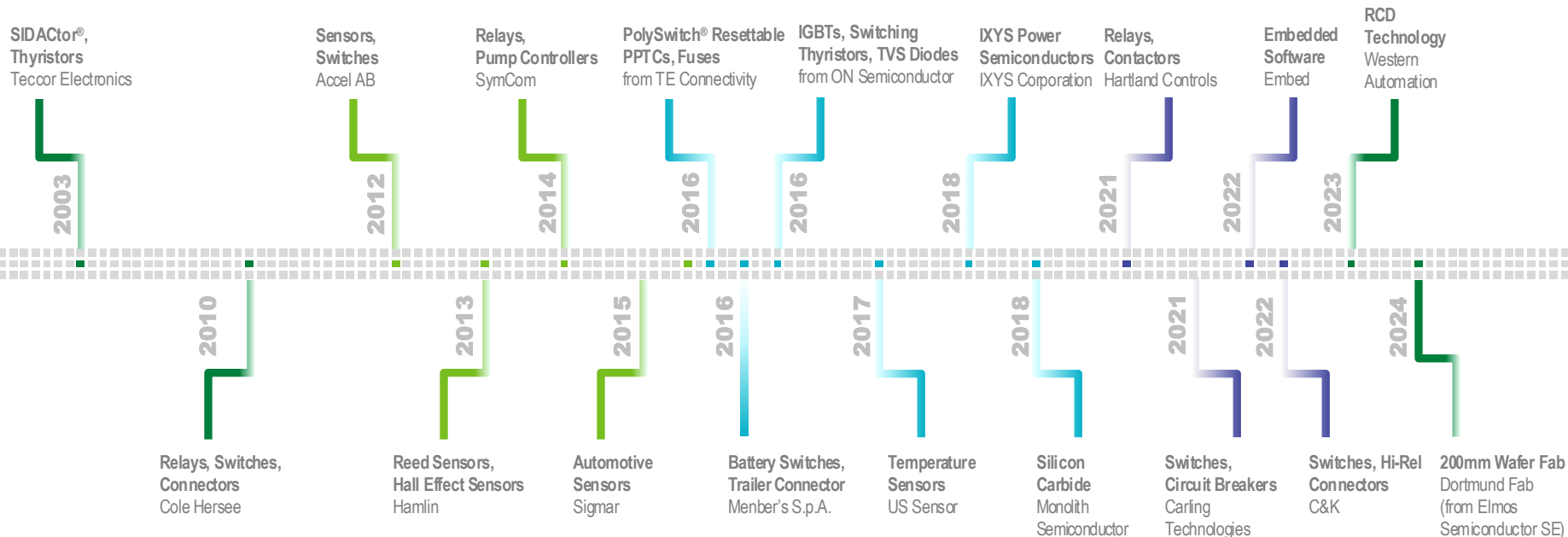
- We **partner with global customers** to design and deliver innovative, reliable solutions
- We collaborate to provide **technical & application expertise**

Who We Serve

- Serving over **100,000 end customers**; our products are found in a variety of industrial, transportation, and electronics end markets—everywhere, every day



Enhancing growth through strategic acquisitions



Littelfuse focused on providing applications solutions to help advance *electronification* and *electrification*

Electronics



- Data Center and Communication
- Building Solutions
- Appliances
- Mobile and Wearables
- Consumer Electronics

Transportation



- Passenger Vehicles
- Heavy Truck & Bus
- Material Handling Equipment
- Off-Highway Vehicles
- Railway Solutions
- Aerospace and Defense
- eMobility & EV Charging Infrastructure

Industrial



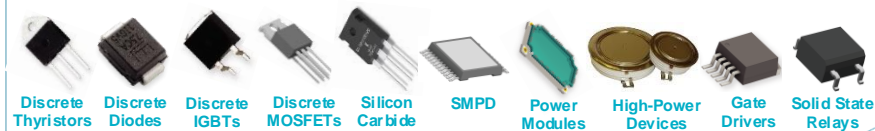
- Industrial Motor Drives
- Factory Automation & Safety Solutions
- Renewable Energy
- Energy Storage
- Heavy Industry
- HVAC
- Medical

Littelfuse → broad spectrum of product technologies

Circuit Protection Solutions



Power Semiconductor Solutions



Industrial Control Solutions



Sensing Solutions



C&K® Switches



Aviation, Defense, and Space

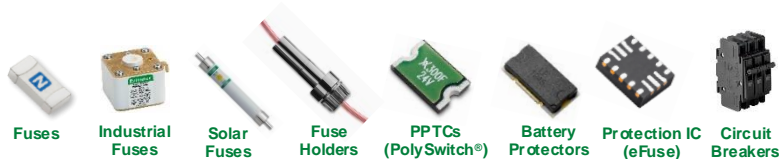


Transportation Solutions



Circuit protection solutions overview

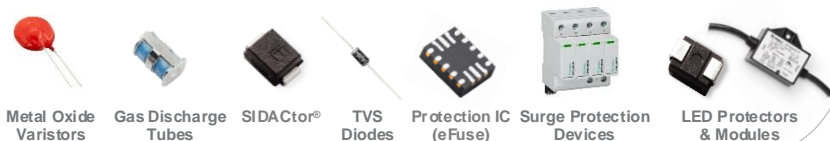
Overcurrent Protection



ESD Protection



Overvoltage Protection



- **Industry's broadest portfolio** with many industry-first solutions
- **New innovative technologies** such as battery protectors, load switches, protection ICs (eFuse), etc.
- **Industry standards expertise and application testing capabilities** for various standards including UL, IEC, ITU, AEC-Q, and others
- **Global network of application expertise** to help address customers' design challenges
- **Solutions for many applications** including eMobility, industrial, data centers, consumer, building solutions

Power semiconductor solutions overview

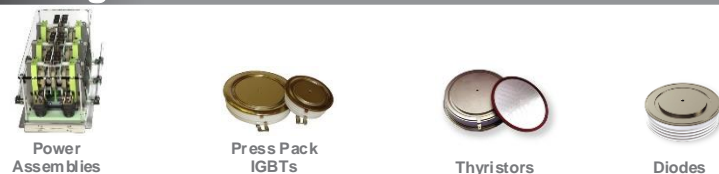
Discrete Devices, Gate Drivers & SSRs



Power Modules



High-Power Devices & Assemblies



- **Wide range of discrete devices and power modules** to address wide spectrum of power conversion needs
- **Industry's broadest lines of SSRs**, available in wide array of configurations, blocking voltages, & load currents
- **Extensive packaging capabilities including** industry standard packages, HV packages, and more
- **Standard and custom assemblies:** standard sub-assemblies for multi-megawatt power systems
- **Solutions for many applications** including industrial, EV charging, power supplies, and renewable energy

Industrial control solutions overview

Protection Relays and Controls



- **Ground fault relays & Arc flash relays** for protection of personnel and industrial equipment
- **Motor & pump protection relays** designed to help protect from overloads, jams, phase loss, heat, etc.
- **Contactors, AC Relays** for safety of industrial equipment, HVAC systems, etc. against abnormal current
- **New Residual Current Monitors (RCM)** for electrical fault detection used across EV charging, industrial and renewables.
- **New High Endurance Solid-State Relays** for industrial automation, food & beverage, & HVAC systems

Industrial Controls



Other Solutions



Standard and customized sensing solutions overview

Magnetic Sensing



Reed Switches



Reed Sensors



Reed Relays



Hall Effect Sensors



TMRs

Temperature Sensing



Battery Mini-breakers



NTCs



RTDs



Temperature Probe & Assemblies



Temperature Indicators



Thermal Protectors

Other Sensing Solutions



PIR Motion Sensors

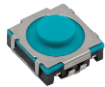


MCUs

- **Wide array of magnetic sensing products:** Reed, Hall Effect, and TMR
- **Broad range of temperature sensing** including thermistors and RTDs
- **Innovative solutions** such as PIR motion detectors & digital temp. indicators solutions for USB-C (setP™) and Lithium-Ion battery (TTape™) protection
- **Custom sensor design support** including custom packages, simulations and more
- **Solutions for many applications** including appliances, smart meters, battery management, automotive, EV, HVAC, and others

C&K® Switches solutions overview

Tactile, Pushbutton, Key Switch, DIP



Tactile



Pushbutton



Keyswitch



DIP

Detect, Snap Acting, Slide, Toggle



Detect



Snap Acting



Slide



Toggle

Rocker, Switch Lock, Rotary



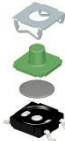
Rocker



Switch Lock



Rotary

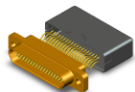


Customization

- **High-reliability, tactical, & miniaturized switches** with over 35,000 standard products and over 10 million switch combinations available in a variety of formats and styles
- **Custom design & innovation** to meet customer requirements for haptic touch, look, sound, and other unique features
- **Value added services** from integrated connectors and wire to fully customized assemblies
- **State-of-the-art manufacturing** facilities in Europe and Asia with in-house design and testing facilities

Aviation, defense, and space solutions

Connectors and rapid splicing solutions



Connectors



Accessories



SpaceSplice[®]
AeroSplice[®]

- **Connectors & accessories:** high-performance electromechanical switches, connectors, splice and accessories for aviation, defense and space applications
- **Cable assemblies and harnesses:** Electrical Wiring Interconnect System (EWIS) and value-added products for aviation, defense and space applications
- **Electronic components:** designed to meet highest reliability standards and designed for mission critical and rugged applications

Harnesses and cable assemblies



Aviation passenger
service unit



Aviation lighting &
comfort controls



Defense Harness
interconnect



Satellites &
Launchers

Components for mission critical systems



TVS Diodes



Fuses



Varistors



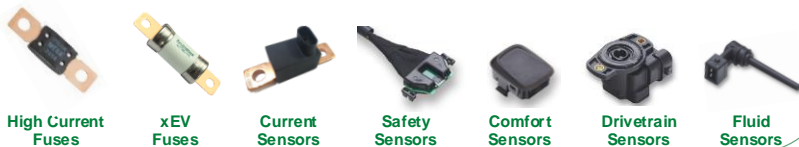
MOSFETs



Switches

Transportation* solutions overview

Protection & Sensing Solutions



Power Distribution Modules



Relays & Switches



- **Wide range of circuit protection solutions** with AEC-Q qualification and PPAP capability
- **Extensive portfolio of sensing solutions** to monitor passenger safety and comfort, emissions, and more
- **Standard & custom power distribution modules** housing a variety of fuses, relays, and other electrical components
- **Variety of DC solenoid relays** for remote switching of electrical currents from 20 A to 600 A
- **Multiple electric/electronic switches** for battery disconnection, ignition, windshield wipers, and more

TechPoint: technical resource library

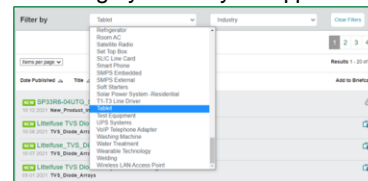
Check out this [overview video](#) and sign up to access Littelfuse content techpoint.littelfuse.com

Single destination for resources

- Open to Littelfuse, Partners and Customers
- Datasheets, images, and much more!
- Enhanced search capability
- Browsing by Industry or Application

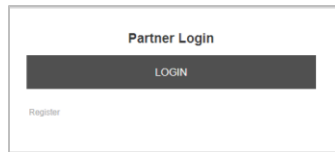
Search & Browse

- Search for content across the full library
- Browsing by Industry or Application



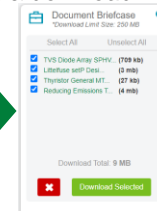
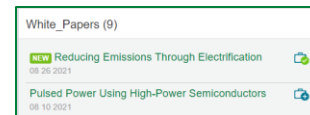
Easy sign in

- Registering a new account for first time sign-in
- Using SSO/Okta credentials for subsequent sign-ins



View & download

- Document briefcase: wish list & download



Dashboard

- Overview of the latest content: New & Updated

New	Updated
Littelfuse_Gate_Drivers_PL 10/10/2021 View	TVS Diode Array SPHV_C Datasheet 10/10/2021 View
Littelfuse_High_Side_Low_Side_Image 10/10/2021 View	Littelfuse Discrete Thyristors K19472_4_0 Datasheet 10/10/2021 View
Littelfuse_Power_Semiconductors 10/10/2021 View	Littelfuse Discrete Thyristors 10/10/2021 View
Littelfuse_Half_Bridge_Image 10/10/2021 View	Littelfuse SiDACtor B61089BDR B61089GQR New Product Introduction 10/10/2021 View
Littelfuse_Power_Semiconductors 10/10/2021 View	Littelfuse SiDACtor B61089BDR B61089GQR New Product Introduction 10/10/2021 View

Key folders

- Application spotlights
- Competitor cross reference
- Customer Success Stories
- New Product Introductions
- Datasheet, Videos, Design Guides, etc

Additional information can be found on Littelfuse.com

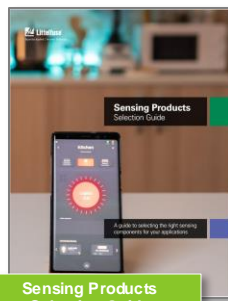
Explore the world of Littelfuse with the electronics eCatalogs (ecatalogs.littelfuse.com)



Circuit Protection
Selection Guide



Power Semiconductor
Product Catalog



Sensing Products
Selection Guide



Integrated Circuit
Selection Guide



C&K Switches
Selection Guide

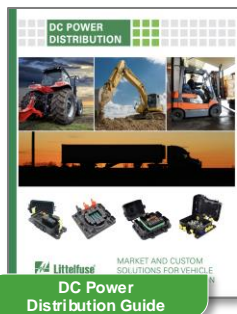


Aerospace
Application Guide

Click on images
for more information



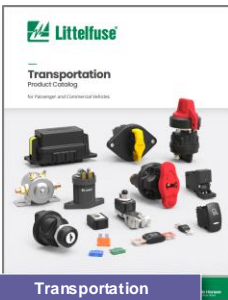
Scan
me



DC Power
Distribution Guide



Automotive Power Relays
Selection Guide



Transportation
Product Catalog



Industrial Fuse
Products Catalog



High-Speed Fuse
Selection Guide

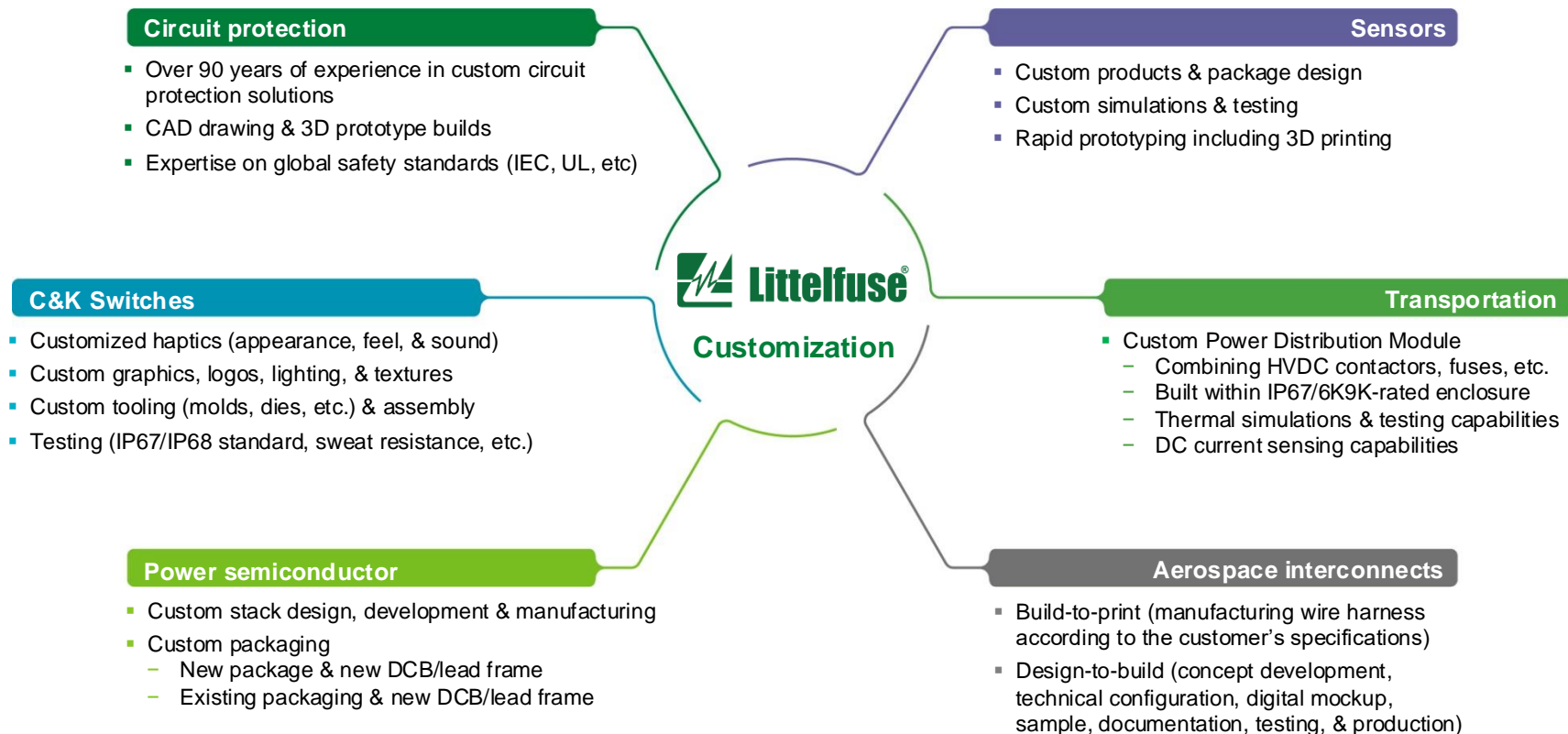


Protection Relays &
Controls Catalog



Expertise Applied | Answers Delivered

Littelfuse customization capabilities



Local resources supporting our global customers



Sustainability: Environment, Social, and Governance

More information can be found in our [Littelfuse 2023 Sustainability Report](https://www.littelfuse.com/sustainability) on www.littelfuse.com

Environment

24%

reduction in GHG intensity since 2019

Goal: 38% by 2035

46%

of our manufacturing sites
utilize renewable energy

**Established site-level annual
GHG and water target**

37%

increase in water recycling

**Three-year consecutive reduction
in hazardous waste**

Social

22.5%

females in leadership,
an increase of 1.5% from prior year

**Enhanced leadership training
and coaching programme**

3 Sites

Maintained zero workplace injuries
for 3+ consecutive years

805

Critical suppliers screened for ESG risk

91%

of employees agree their manager sets a
good example for ethical behavior

Governance

Local ethics ambassadors
program launched at
28 largest locations

30,200

hours ethics and compliance training



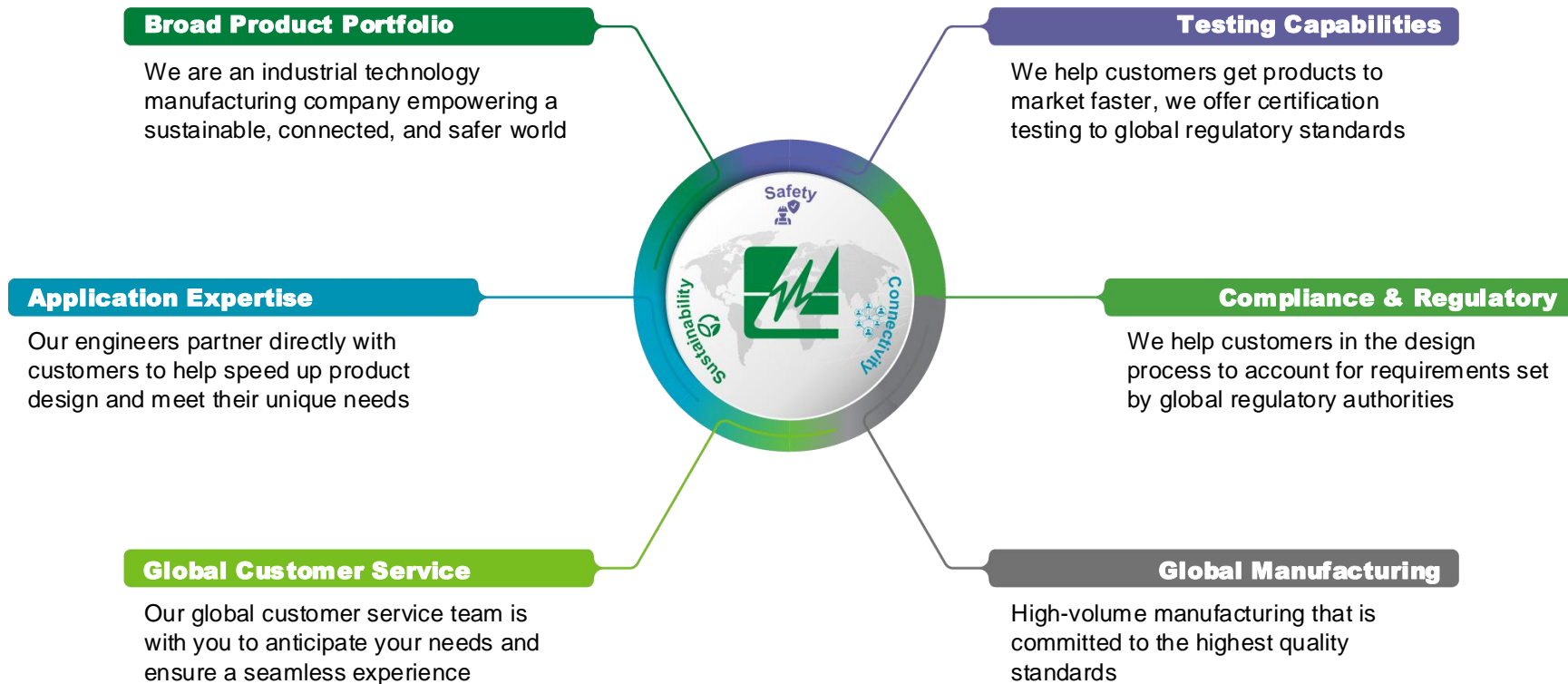
**Gold Rating Ecovadis
Program (94th percentile)**



**Obtained third-party
verified GHG data**

**Enhanced Workplace
Investigation Program and
Training**

Partner for tomorrow's electronic systems





Expertise Applied | Answers Delivered

Littelfuse.com

This document is provided by Littelfuse, Inc. ("Littelfuse") for informational and guideline purposes only. Littelfuse assumes no liability for errors or omissions in this document or for any of the information contained herein. Information is provided on an "as is" and "with all faults" basis for evaluation purposes only. Applications described are for illustrative purposes only and Littelfuse makes no representation that such applications will be suitable for the customer's specific use without further testing or modification. Littelfuse expressly disclaims all warranties, whether express, implied or statutory, including but not limited to the implied warranties of merchantability and fitness for a particular purpose, and non-infringement. It is the customer's sole responsibility to determine suitability for a particular system or use based on their own performance criteria, conditions, specific application, compatibility with other components, and environmental conditions. Customers must independently provide appropriate design and operating safeguards to minimize any risks associated with their applications and products. Read complete Disclaimer Notice at: www.littelfuse.com/disclaimer-electronics.